

# 2025

## ANNUAL REPORT



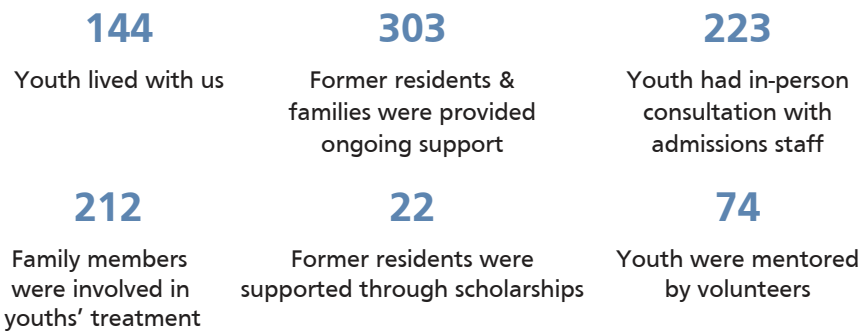
THIS REPORT COVERS MERCY HOME'S FISCAL YEAR, WHICH RAN FROM JULY 1, 2024 THROUGH JUNE 30, 2025.

### Mercy Home for Boys & Girls

Mercy Home for Boys & Girls has been a solution for kids in crisis since 1887.

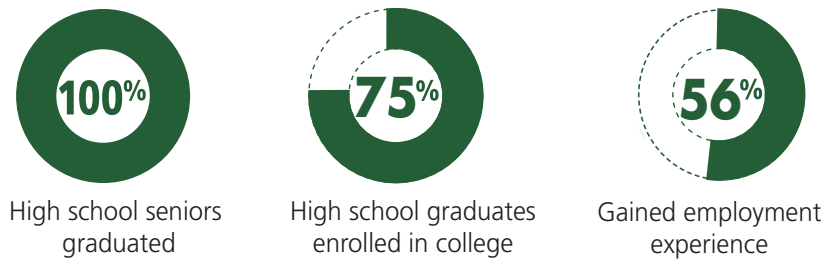
We provide life-changing care and support services to abused and at-risk children while promoting healing for families and communities.

#### By the Numbers During fiscal year 2025:



**807** People Served \*Total individuals  
Some people received multiple services.

### Youth after coming to Mercy Home



#### We Provided During fiscal year 2025:



Rev. L. Scott Donahue  
President & CEO



Nancy Temple  
Board Chairperson

### Growth, Fueled by You

Because of the extraordinary commitment of friends like you, Mercy Home continues to grow and offer a lifeline to more young people and families in crisis.

This growth is imperative, and it's fueled by you.

In partnership with our donors, we were able to open our Home to even more young people at a time when funding for many vital programs is being reduced or eliminated. Your generosity means that children and families facing a crisis know they can rely on Mercy Home for help, even as other options diminish.

As we served more people in need this year, we strengthened our investment in the dedicated professionals who provide daily guidance and compassion. Donor support enables us to recruit and retain exceptional talent, ensuring our coworkers are skilled, empowered, and inspired to deliver the highest quality care—especially as demand continues to rise.

And as our annual report shows, this strong foundation has positioned Mercy Home to meet rising needs with confidence and stability.

On behalf of our board and all whose lives and futures are enhanced by your kindness, thank you.

## Governance 2024—2025

### CHAIRMAN

Nancy Temple  
Katten & Temple, LLP

Sue Bettman  
Brunswick Group

Mark Brady

### PRESIDENT & CEO

Rev. L. Scott Donahue  
Mercy Home for Boys & Girls

Robert G. Carmody

Eileen Mitchell  
AT&T Illinois

Joseph P. Nolan  
Beverly Capital LLC

### SECRETARY

Rich Daniels  
City Lights Music Inc.

Fran O'Malley  
Worsek & Vihon

### TREASURER

Timothy P. Knight  
Robert R. McCormick Foundation

Johanna Rahal  
Rahal Letterman Lanigan Racing

Patricia Walsh



Mercy Home is nationally accredited by the Council of Accreditation of Services for Families and Children, Inc. (COA)

## FINANCIAL STATEMENT

### OPERATING REVENUE

Support from donors	47,725,484	95.0%
Sale of printing services	1,185,071	2.4%
Government revenue	0	0.0%
Family support	59,068	0.1%
Other	1,273,401	2.5%
<b>Total</b>	<b>50,243,024</b>	<b>100.0%</b>

### OPERATING EXPENSES

Program services		
Youth programs	35,085,649	70.8%
Mission Press	1,522,466	3.1%
Televised Mass	912,277	1.8%
Total program services	37,520,392	75.7%
Fundraising	10,550,660	21.3%
Management and general	1,507,458	3.0%
<b>Total operating expenses</b>	<b>49,578,510</b>	<b>100.0%</b>

### ASSETS

Current assets	23,284,671
Investments	210,210,038
Fixed assets	44,268,995
Other	121,403
<b>Total assets</b>	<b>277,885,107</b>

### LIABILITIES

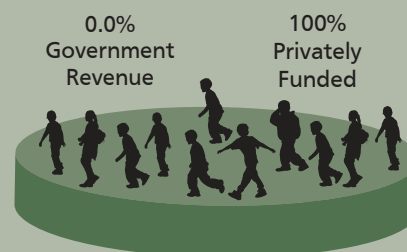
Accounts payable and accrued expenses	2,429,637
Deferred revenue	588,836
Gift annuities payable	10,409,980
Other	410,602
<b>Total liabilities</b>	<b>13,839,055</b>

### NET ASSETS (Assets minus Liabilities)

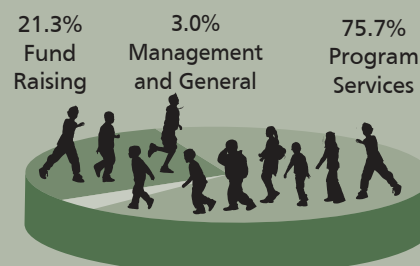
Unrestricted	225,964,440
Board designated for annuity and trust obligations	10,409,980
Donor restricted - temporary	5,663,189
Donor restricted - perpetual	22,008,443
<b>Total net assets</b>	<b>264,046,052</b>

### A CLOSER LOOK AT 2024 — 2025

Mercy Home raised 100.0% of its operating revenue privately. This includes support from donors, sale of printing services, family support and other miscellaneous sources.



Approximately 75.7 cents of every dollar spent on operating expenses went toward program services.



Mercy Home's fundraising ratio, defined as fundraising expenses as a percentage of support from donors, was 22.1%. That is lower than the 35% recommended by the Better Business Bureau's Wise Giving Alliance.

### INVESTMENTS

Total investments	210,210,038
Perpetually restricted funds for scholarships	21,721,240
Board designated for gift annuity obligations	10,409,980
Other donor imposed restricted funds	5,950,392
Unrestricted investments available for future operations (endowment)	172,128,426

\* One way we honor our commitment to the children we care for is by maintaining an endowment, which provides a safety net. The funds from the endowment are invested and overseen by our Board. As of June 30, 2025, our Unrestricted Endowment would cover operating expenses for up to 42 months.